

Installing the IceCube Virtual Machine on Windows

Sarah Mancina
IceCube Bootcamp
Madison, WI

May 31, 2019

1 Installing Virtual Box and Downloading the VM

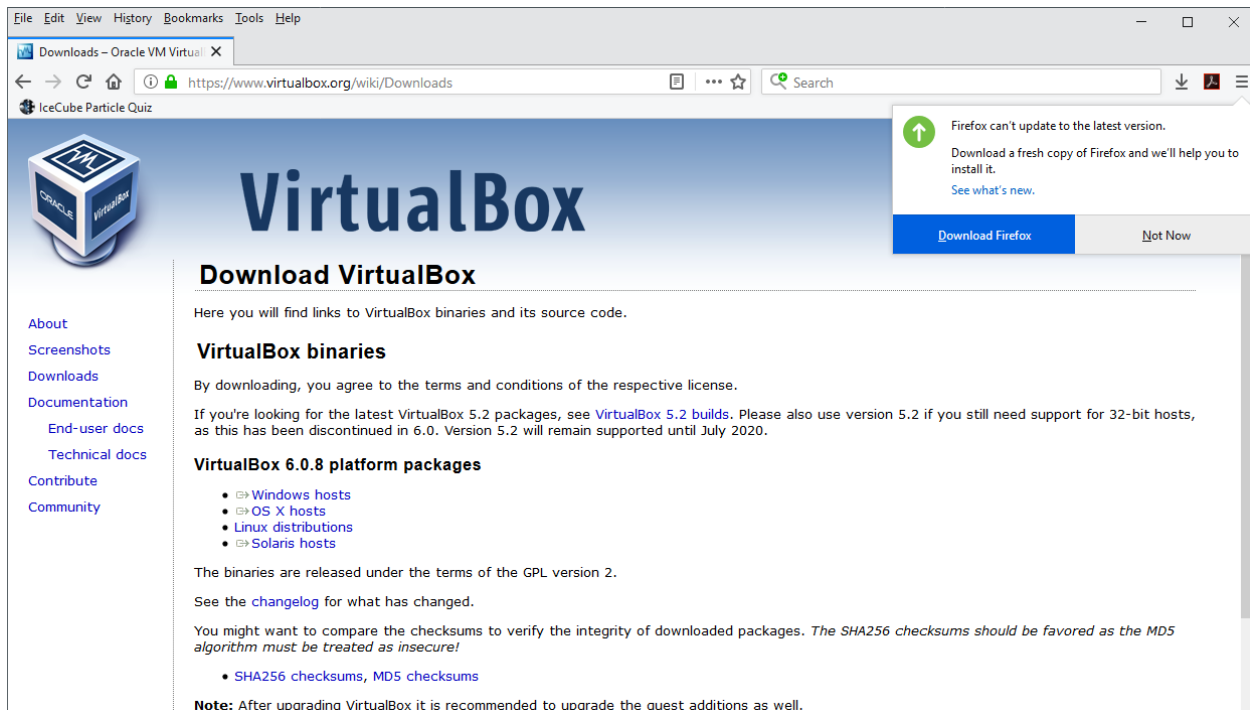


Fig. 1.1. Download the free VirtualBox software from their website:
[virtualbox.org](https://www.virtualbox.org).

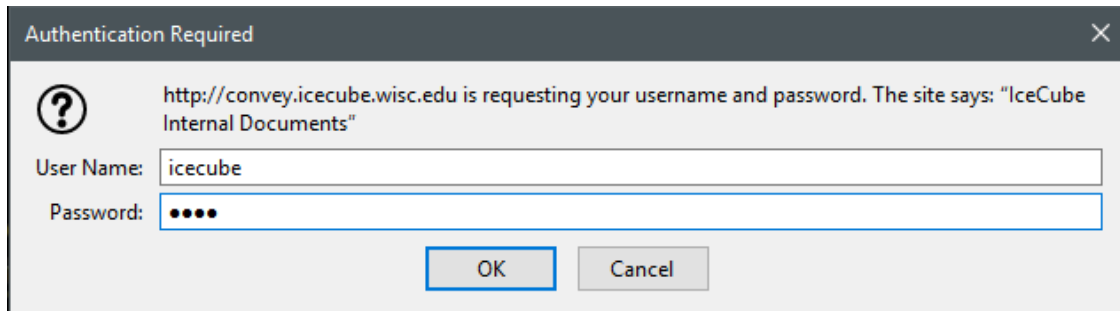


Fig. 1.2. Go to: convey.icecube.wisc.edu/data/user/icecube-bootcamp/bootcamp2019/virtualbox_vm/IceCube-VM/. Ask another IceCuber for the usual IceCube password to access the page.

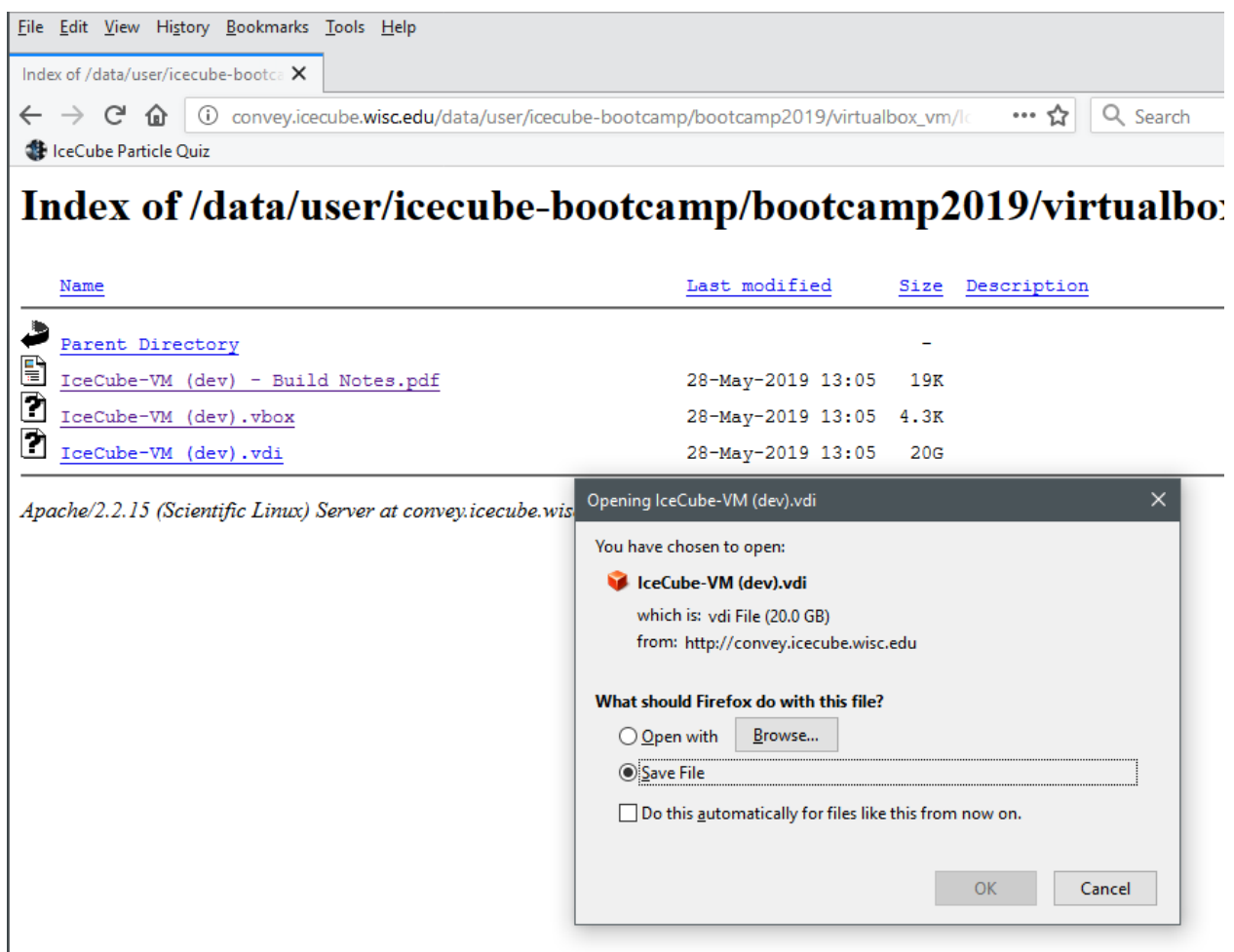


Fig. 1.3. Download the IceCube VM .vdi and .vbox files from the page. **Note:** The Bootcamp VM is 20GB! Make sure you don't run out of disk space! The PDF document includes passwords for the users on the virtual machine so keep the page open.

2 Adding the VM to VirtualBox

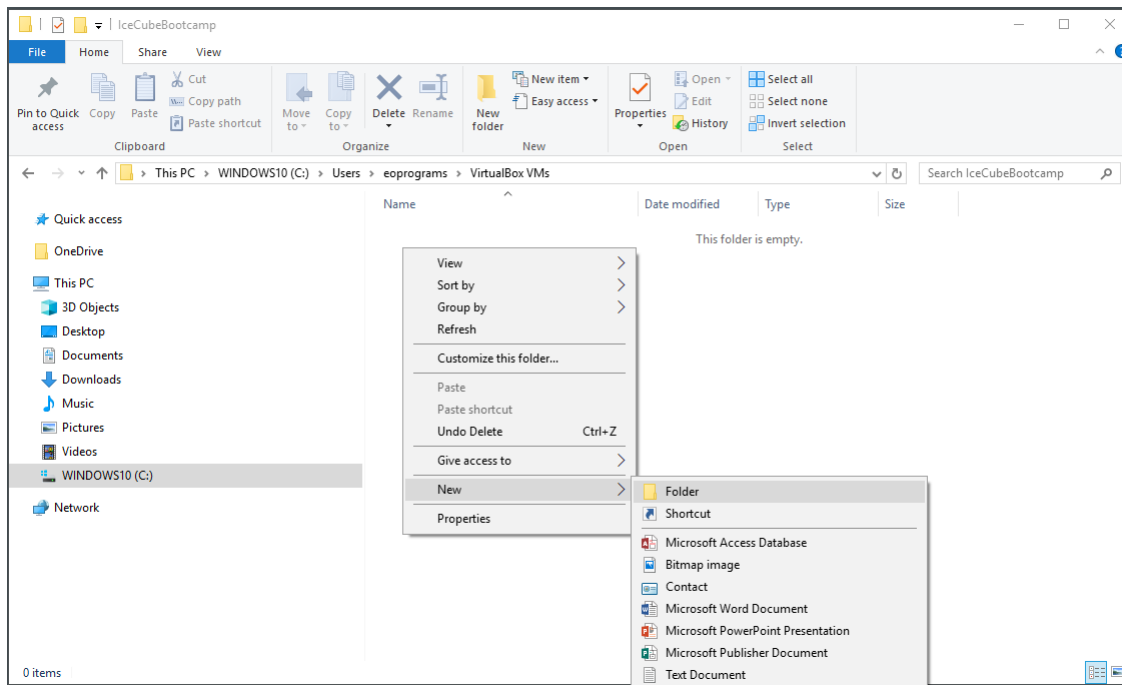


Fig. 2.1. Go to your user file (named eoprogram on the example machine) and open the Virtual Box VMs folder. Create a new folder to store your VM in.

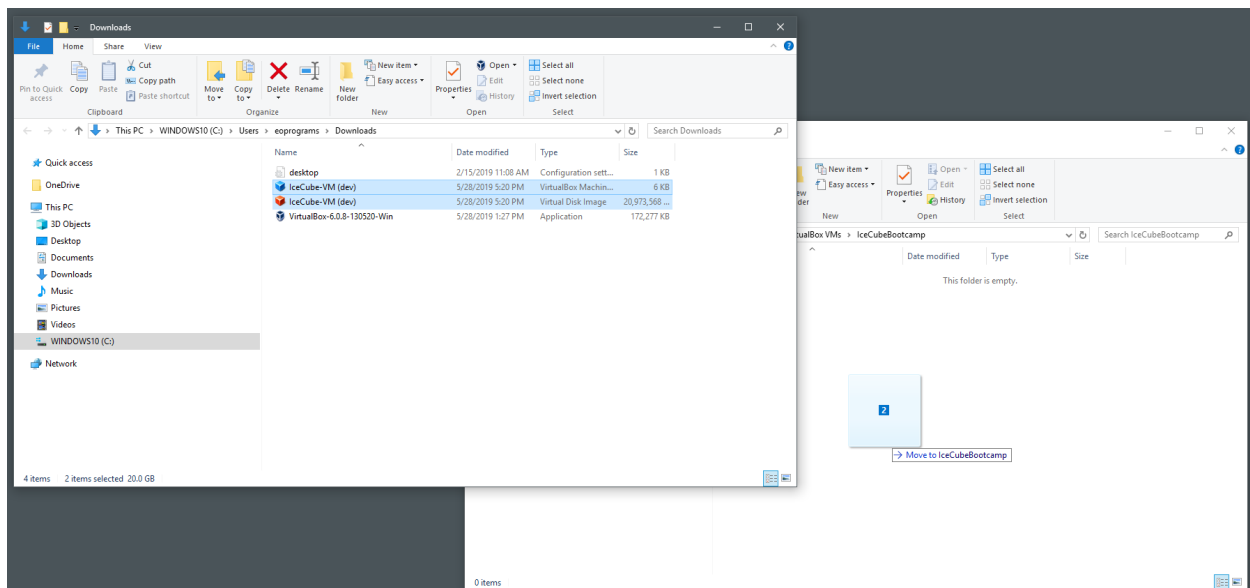


Fig. 2.2. Move the .vdi and .vbox files into the folder.

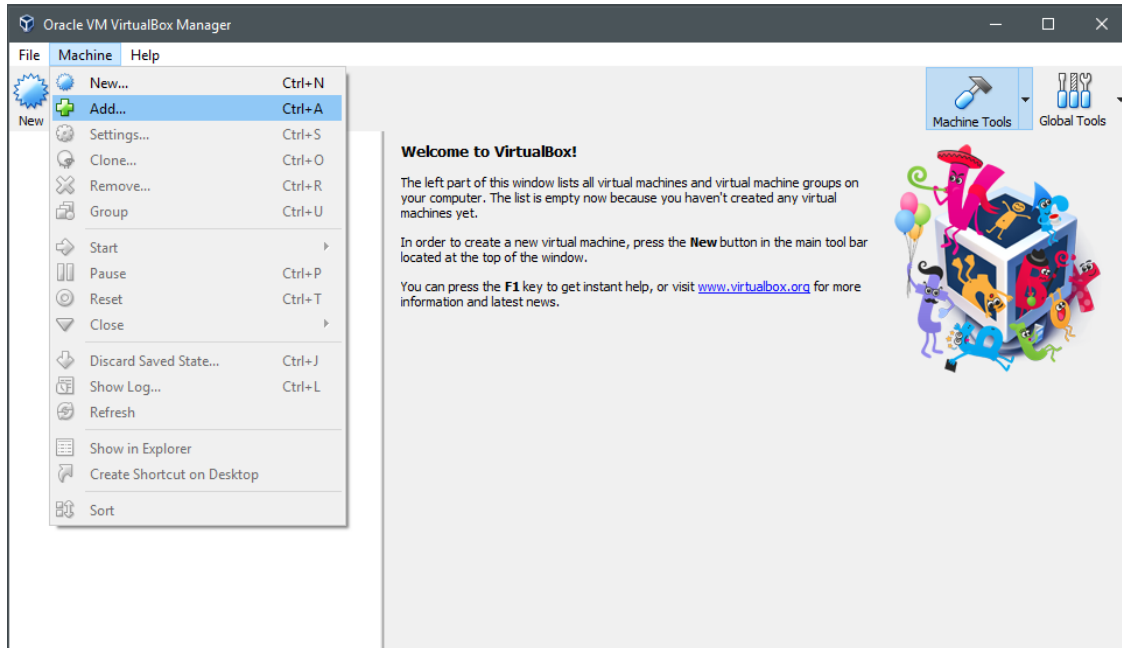


Fig. 2.3. Open up virtual machine application and open machine and select Add.

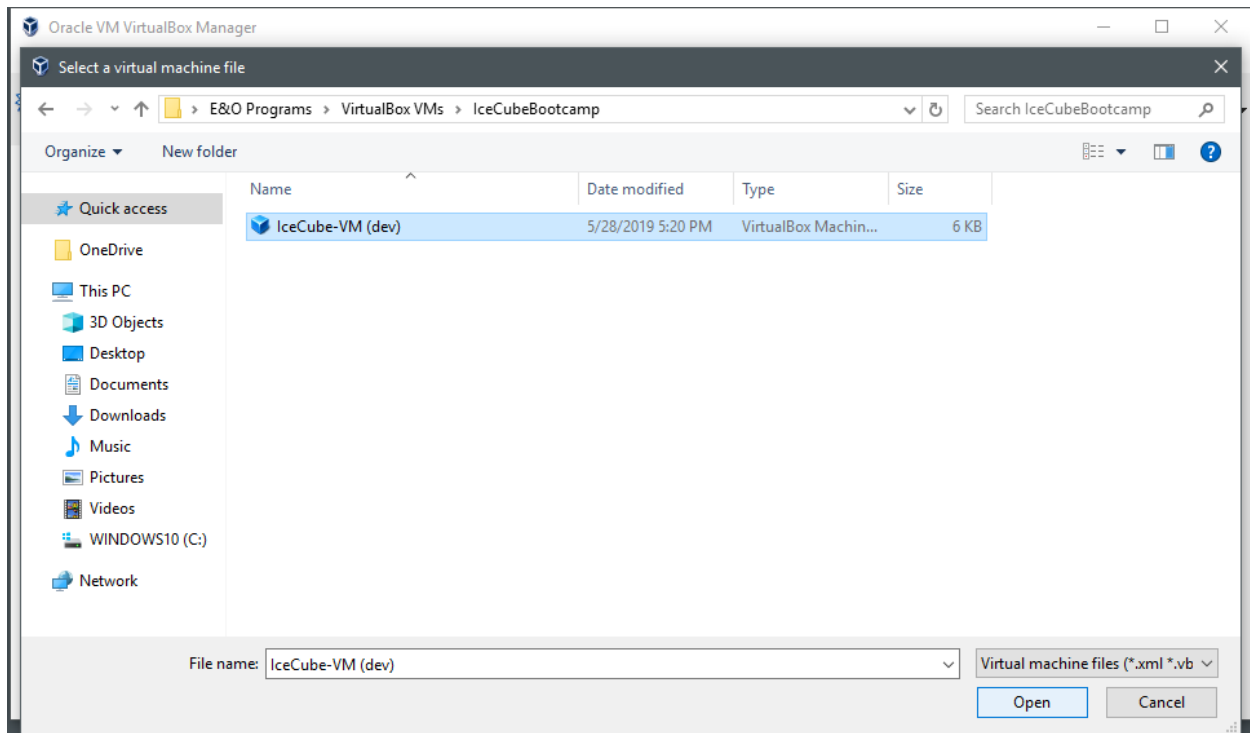


Fig. 2.4. Click on your machine's folder and open the .vbox file to add the IceCube VM.

3 Opening the VM

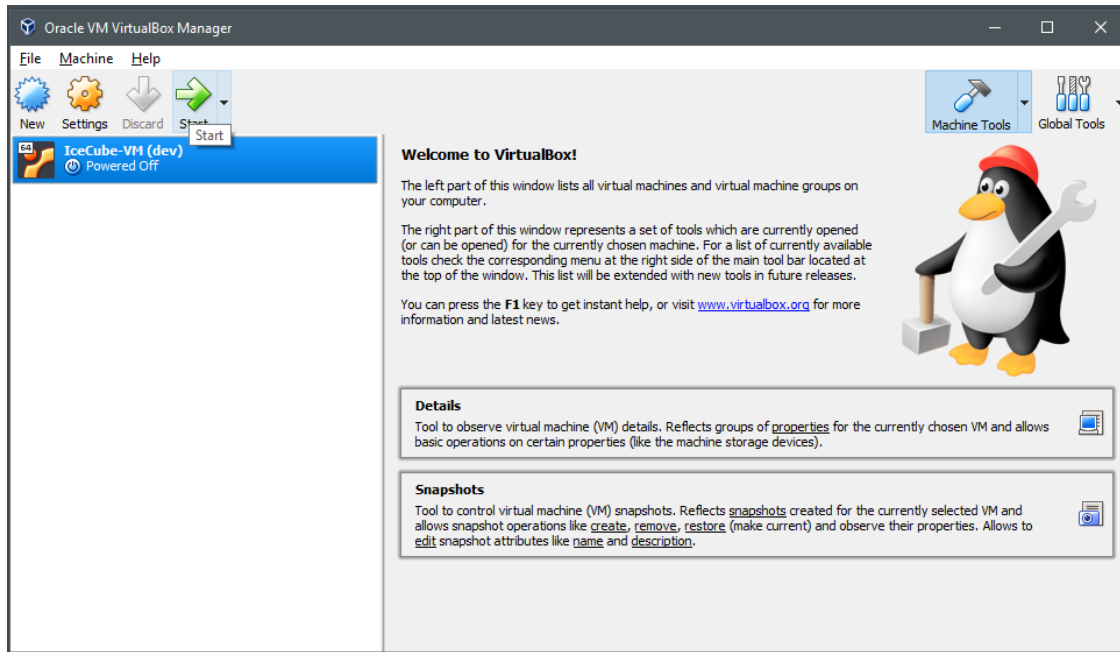


Fig. 3.1. Your virtual machine should now be created. You can open the machine by clicking on the VM.

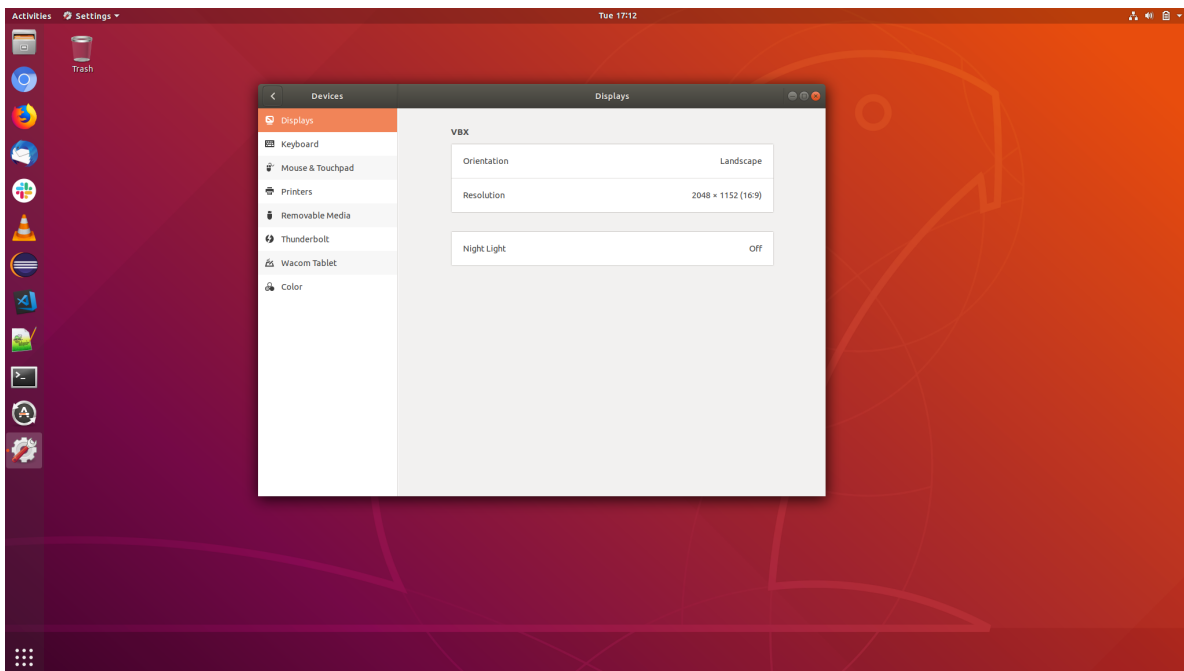


Fig. 3.2. Log into the machine using the passwords in the [build notes pdf](#). If the screen is too small, open settings and in display, adjust the resolution.